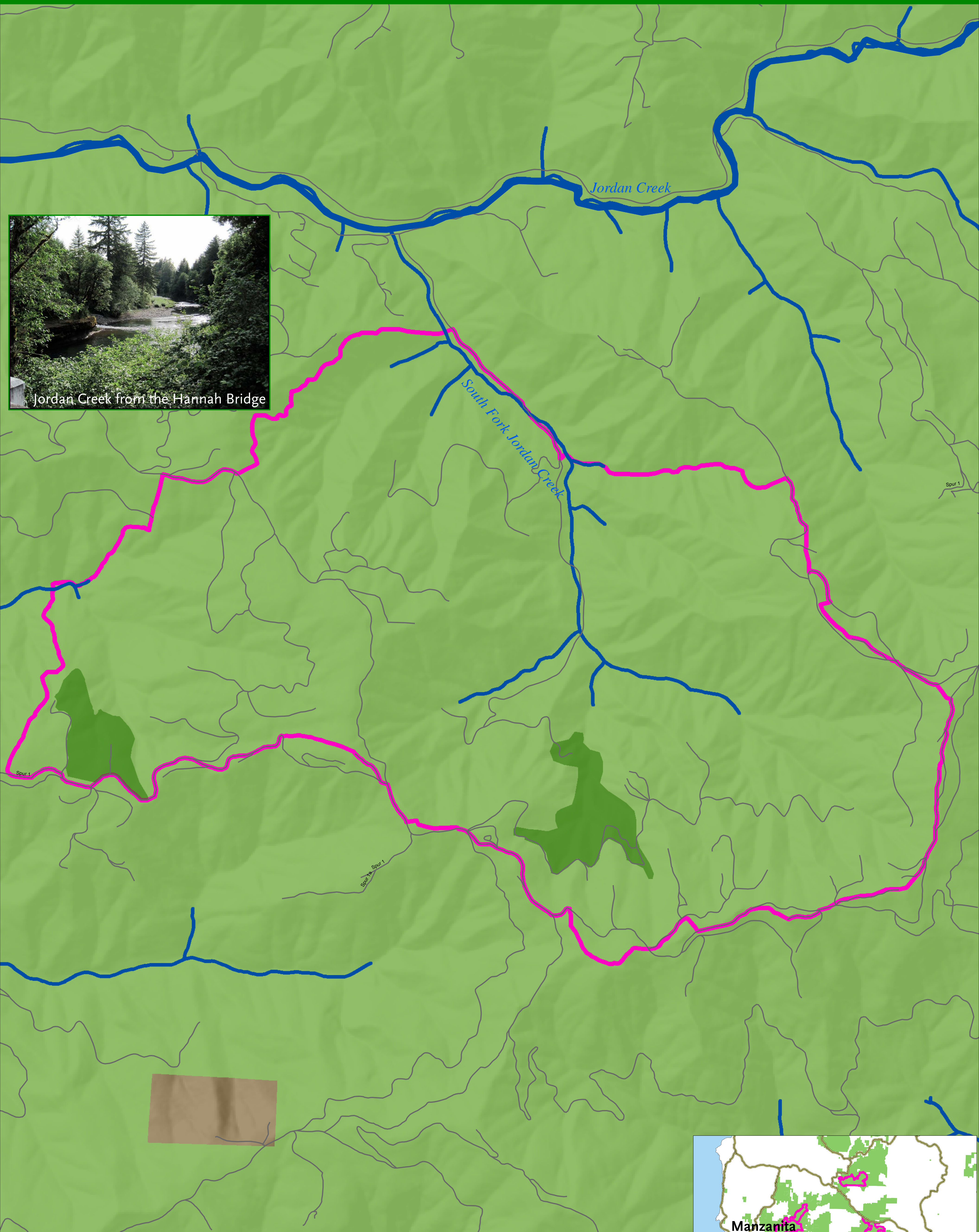
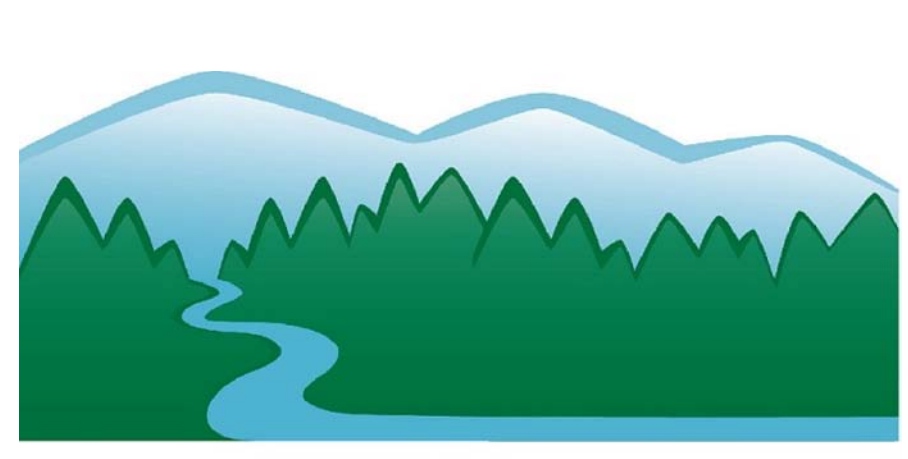


# Hembre Wildlife Conservation Area 2,981 Acres

## Tillamook State Forest



Jordan Creek from the Hannah Bridge



North Coast State Forest Coalition  
[www.forestlegacy.org](http://www.forestlegacy.org)  
09.24.13

- Roads
- Highways
- Rivers
- Wildlife Conservation Areas
- Older Forest
- State Forest
- Private Land

