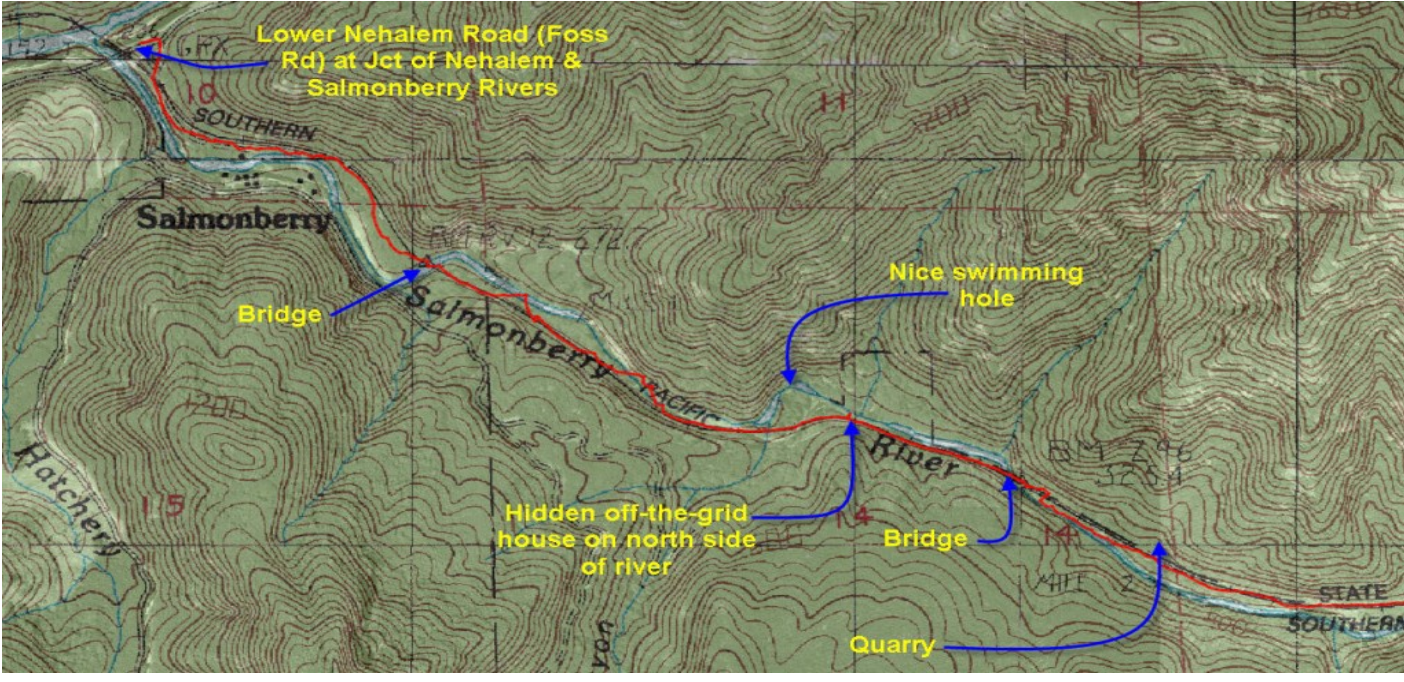


Lower Salmonberry Part 6: Nehalem Confluence



North Coast State Forest Coalition
forestlegacy.org
facebook.com/ForestLegacy



TRAIL LOG



The final stage of the hike leads from Belfort all the way to the confluence of the Salmonberry and the Nehalem Rivers. There is a curve in the river that once marked the location of Belfort on the North side of the Salmonberry. The trail leads away from this, and reaches the quarry (about 1 mile from Belfort) which was used to procure all the rock fill that temporarily supported the railroad embankment. About 0.5 miles further, the trail crosses the river again and begins to run along the South side of the river. Proceeding through ever widening embankments, there is a steel cable strung between two trees-about a 0.25 miles beyond the bridge. If looking carefully amongst the trees, the line on the opposite shore is visible as it leads to a partially concealed home that has been patched together with found materials. But beware, and make sure to respect the owner's privacy. Just around the corner is one of the best swimming holes on the river, and close enough to the terminus of

the trail to provide a lasting refreshment for the drive out. As the trail turns the corner (bending to the left), the tracks will lead to a narrow portion that bends to the right again. Just prior to that, there will be a small ravine dropping down the embankment towards the river. This is probably the best way to reach the shore. Once at the river level, the trail follows the shore a bit upstream to some nice pools interspersed by large rocks. A large boulder on the shore sits over a small patch of sand, offering a handy wind break. Returning to the railroad tracks, keep traveling West. About 0.67 miles onwards, the trail crosses the last bridge that has a huge tree is wedged underneath it. Just past the bridge, there will be two homes along the North bank of the river, with a path that angles away from the tracks on the right side shortly after. Take this route, which will lead to the road quickly.

Info and photos from Jim Thayer, foresthiker.com